

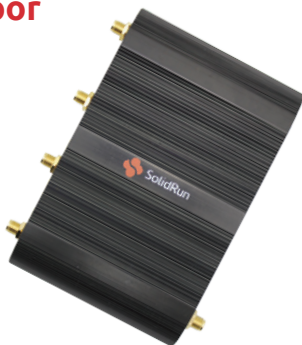
# SolidSense Edge Gateway

SolidSense N6 Edge Gateway is an enterprise Internet of Things gateway designed for servicing a local network of IoT devices with a range of solutions and business applications. SolidSense is the ultimate IoT M2M solution, with high-end connectivity options, on an industrial grade fanless platform in both an indoor and outdoor configuration.

Based on the robust and modular NXP i.MX6 Arm Cortex A9 Single/Dual/Quad core processor, SolidSense is a feature-rich edge platform designed to provide flexibility for developers and OEMs in implementing an almost endless range of IoT solutions.

---

**Indoor**



**Outdoor**

---

## Software

- Civil Infrastructure Platform (CIP) Linux kernel for the robustness & long term support
- Containerized platform for extensive flexibility
- Eclipse IoT Kura container for IoT application development and integration
- Device management services including kernel safe update
- Ready to use applications containers
- Micro services architecture to access platform I/O
- Wirepas support



**SolidSense N6  
Indoor**

**SolidSense N6  
Outdoor**

**SolidSense N6  
Industrial**

Features			
Processor	NXP i.MX6 Arm Cortex A9 Single to Quad core 800MHz		
Memory & Storage	Up to 2GB DDR3   eMMC (8GB by default)		
Networking	1 x RJ45 Ethernet 10/100/1000 (max 470 Mbps) WiFi and Bluetooth 2.0 (2.4 GHz) Dual BLE 4.2 (SDR based on Nordic Semiconductor) LTE Cat 4 EU/AU/US	1 x RJ45 Ethernet 10/100/1000 (max 470 Mbps) WiFi and Bluetooth 2.0 (2.4 GHz) BLE 4.2/5.0 (SDR based on Nordic Semiconductor) LTE Cat 4 EU/AU/US	2 x RJ45 Ethernet 10/100/1000 (max 470 Mbps) WiFi (2.4 GHz) BLE 5.0 (2x nRF52840- SDR based on Nordic Semiconductor) LTE Cat 4 EU/AU/US
Connectivity	4 x USB 2.0 HDMI MicroSD Physical SIM	Accessible only with case open: 1 x USB 2.0 type A MicroSD Physical SIM Ethernet 1 x Optional cable gland for external connectivity	2 x USB 2.0 type A HDMI MicroSD 2 x Physical SIM CAN Bus 2 x RS485/RS232 + 1 x RS232 (isolated, on terminal blocks) Solid-state relay output, Digital inputs Additional internal headers with I2C available
Development and Debug Interfaces	Console port (UART)	Console port (UART)	Console port (UART)
Certification	CE, FCC/CSA	CE, FCC/CSA	CE, FCC/CSA
Power	9V to 36V via twist and lock jack	AC 100-240V, integrated power supply with unterminated cable	7V to 36V with reverse polarity protection (battery backup) PoE source for external
Temperature Range	-25°C to 65°C	-30°C to 80°C	-25°C to 65°C
Dimensions	120 x 80 x 30mm	223 x 134 x 84mm	132.5 x 144 x 40.5mm
Enclosure	Extruded aluminum, IP32, 5 x SMA (2.4GHz x 3, LTE, GPS)	Polycarbonate (UL94V), IP68, 6 x SMA (3 x 2.4GHz, 2 x LTE, GPS)	Extruded aluminum, IP32, 8 x SMA